

POLY16 Plus Clamp Saddles

Technical Specifications

A complete range of clamp saddles up to d 315 mm for water market. The blue saddle with flat gasket in NBR allowing to overcome: ovalized/scratched-undersized pipes. The flat gasket guarantees a perfect adherence to the pipe, increasing the contact surface. The flat gasket also grants high resistance in case of vacuum and/or suction.



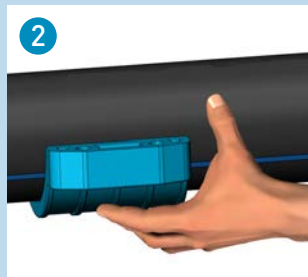
Pressure range	MOP of 16 bar from 20 mm up to 160 mm (MOP of 10 bar up to 315 mm see single item table)
Temperature range	-10 °C to +45 °C
Materials	Body UV stabilized polypropylene (PP) Gasket Food-safe NBR rubber suitable for potable water. Reinforcement ring Stainless steel AISI 430 Bolts and nuts Galvanized or stainless steel
Standards	For PE pipes: DIN EN 12201; ISO 11922-1; DIN 8074; EN 12201-1/2; AS/NZS 4130; BS 6572; BS 6730; ISO 4427; UNI 7990; ISO 12162 For PVC pipes: UNI EN 1452-1/2 Threads DIN EN 10226 (ISO 7-1); BS 21; AS 1722.1
Test standards	AS/NZS 4129 ISO 13460

POLY16 Plus Clamp Saddles

Assembly Instructions



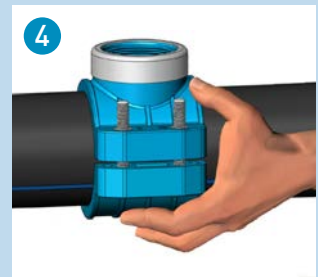
Check all components. Clean the pipe.



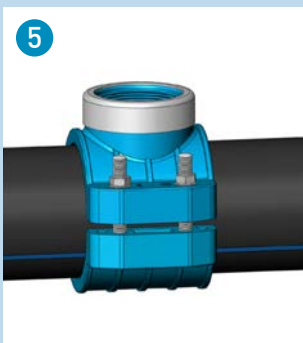
Place the bolts in the lower part of the saddle and put it under the pipe.



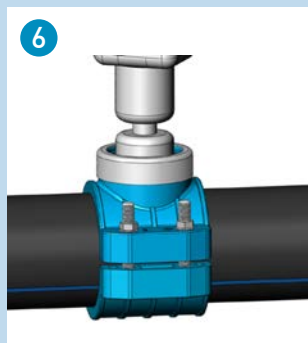
The gasket properly into its seat



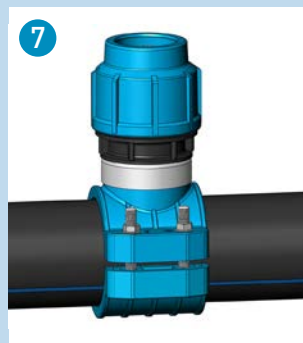
Line up the threaded part with the lower part.



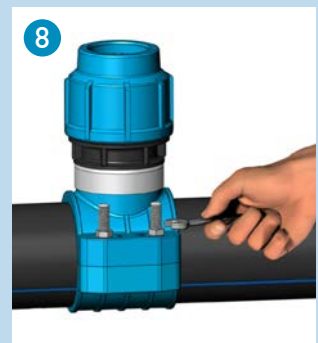
Insert washers and nuts without tightening in depth until the first saddle blocking (*).



Drill the pipe in correspondence with the offtake (**).



Assemble a male adaptor on the offtake (use teflon tape).



Complete the screwing of the bolts until the two parts of the saddle touch each other.

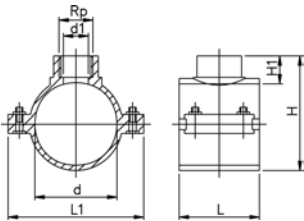
Please note:

[*] In order to make the assembling of male adaptor threaded part easier, avoid too much overscrewing the bolts of the clamp saddle.

[**] Caution, do not tighten the nuts before the installation of the fitting.

POLY16 Plus CLAMP SADDLES

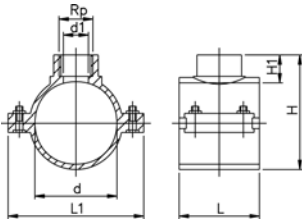
654X - Blue clamp saddles with stainless steel reinforcement ring, flat gasket and stainless steel bolts and nuts (PN16-PN10)



- water PN16-10
- suitable for PE and PVC pipes
- material: PP
- female thread: ISO 7 (parallel)
- gasket: O-ring with flat lip (NBR)
- reinforcement ring: stainless steel AISI430
- bolts and nuts : stainless steel
- colour: blue
- B= N° of bolts
- M= bolt type
- (*) with O-ring gasket

d [mm]	Rp [inch]	PN	B	M	Code	SP	GP	kg
* 20	½	16	2	M8X40	727 627 001	1	180	0.121
* 25	½	16	2	M8X30	727 627 011	1	150	0.110
* 25	¾	16	2	M8X30	727 627 012	1	150	0.123
* 32	½	16	2	M8X30	727 627 021	1	150	0.103
* 32	¾	16	2	M8X30	727 627 022	1	150	0.115
* 32	1	16	2	M8X40	727 627 023	1	100	0.164
40	½	16	2	M8X40	727 627 031	1	100	0.137
40	¾	16	2	M8X40	727 627 032	1	100	0.148
40	1	16	2	M8X40	727 627 033	1	100	0.155
50	½	16	4	M8X40	727 627 041	1	100	0.200
50	¾	16	4	M8X40	727 627 042	1	100	0.213
50	1	16	4	M8X40	727 627 043	1	100	0.221
50	1 ¼	16	4	M8X40	727 627 044	1	100	0.225
63	½	16	4	M8X40	727 627 051	1	70	0.216
63	¾	16	4	M8X40	727 627 052	1	70	0.215
63	1	16	4	M8X40	727 627 053	1	70	0.226
63	1 ¼	16	4	M8X40	727 627 054	1	60	0.272
63	1 ½	16	4	M8X40	727 627 055	1	60	0.279
75	½	16	4	M8X60	727 627 061	1	40	0.364
75	¾	16	4	M8X60	727 627 062	1	40	0.362
75	1	16	4	M8X60	727 627 063	1	40	0.384
75	1 ¼	16	4	M8X60	727 627 064	1	40	0.421
75	1 ½	16	4	M8X60	727 627 065	1	40	0.428
75	2	16	4	M8X60	727 627 066	1	40	0.437
90	½	16	4	M8X60	727 627 071	1	34	0.412
90	¾	16	4	M8X60	727 627 072	1	34	0.421
90	1	16	4	M8X60	727 627 073	1	34	0.432
90	1 ¼	16	4	M8X60	727 627 074	1	34	0.472
90	1 ½	16	4	M8X60	727 627 075	1	30	0.474
90	2	16	4	M8X60	727 627 076	1	30	0.481
110	½	16	6	M8X50	727 627 081	1	20	0.511
110	¾	16	6	M8X50	727 627 082	1	20	0.523
110	1	16	6	M8X50	727 627 083	1	20	0.510
110	1 ¼	16	6	M8X50	727 627 084	1	20	0.565
110	1 ½	16	6	M8X50	727 627 085	1	20	0.566
110	2	16	6	M8X50	727 627 086	1	20	0.570
110	3	6	6	M8X70	727 627 087	12	-	1.108
125	½	16	6	M8X50	727 627 091	1	20	0.578
125	¾	16	6	M8X50	727 627 092	1	20	0.590
125	1	16	6	M8X50	727 627 093	1	20	0.592
125	1 ¼	16	6	M8X50	727 627 094	1	20	0.629
125	1 ½	16	6	M8X50	727 627 095	1	20	0.627
125	2	16	6	M8X50	727 627 096	1	20	0.640
125	3	6	6	M8X70	727 627 097	12	-	1.009
125	4	6	6	M8X70	727 627 098	12	-	1.051
140	½	16	6	M8X70	727 627 101	20	-	0.830
140	¾	16	6	M8X70	727 627 102	20	-	0.843
140	1	16	6	M8X70	727 627 103	20	-	0.849

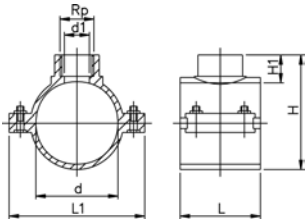
table continued next page



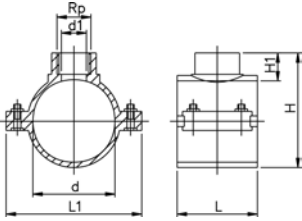
d [mm]	Rp [inch]	PN	B	M	Code	SP	GP	kg
140	1 ¼	16	6	M8X70	727 627 104	20	-	0.880
140	1 ½	16	6	M8X70	727 627 105	20	-	0.892
140	2	16	6	M8X70	727 627 106	20	-	0.898
140	3	10	6	M8X70	727 627 107	10	-	1.132
140	4	10	6	M8X70	727 627 108	10	-	1.196
160	½	16	6	M8X70	727 627 111	20	-	0.899
160	¾	16	6	M8X70	727 627 112	20	-	0.908
160	1	16	6	M8X70	727 627 113	20	-	0.917
160	1 ¼	16	6	M8X70	727 627 114	20	-	0.950
160	1 ½	16	6	M8X70	727 627 115	20	-	0.954
160	2	16	6	M8X70	727 627 116	20	-	0.956
160	3	10	6	M8X70	727 627 117	10	-	1.185
160	4	10	6	M8X70	727 627 118	10	-	1.262
* 180	1	10	6	M10x80	727 627 123	7	-	1.980
* 180	1 ¼	10	6	M10x80	727 627 124	7	-	2.013
* 180	1 ½	10	6	M10x80	727 627 125	7	-	2.007
* 180	2	10	6	M10x80	727 627 126	7	-	2.018
* 180	3	10	6	M10x80	727 627 127	7	-	2.043
* 180	4	10	6	M10x80	727 627 128	7	-	2.092
* 200	1 ½	10	6	M10x80	727 627 135	8	-	1.966
* 200	2	10	6	M10x80	727 627 136	7	-	1.946
* 200	3	10	6	M10x80	727 627 137	7	-	1.980
* 200	4	10	6	M10x80	727 627 138	7	-	2.020
* 225	1 ½	10	6	M10x80	727 627 145	5	-	2.049
* 225	2	10	6	M10x80	727 627 146	5	-	1.566
* 225	3	10	6	M10x80	727 627 147	5	-	2.150
* 225	4	10	6	M10x80	727 627 148	5	-	2.184
* 250	2	10	6	M10x80	727 627 156	5	-	2.472
* 250	3	10	6	M10x80	727 627 157	5	-	2.466
* 250	4	10	6	M10x80	727 627 158	5	-	2.478
280	2	10	6	M10x160	727 627 166	3	-	3.440
* 280	3	10	6	M10x160	727 627 167	3	-	3.543
* 280	4	10	6	M10x160	727 627 168	3	-	3.585
315	2	10	6	M10x110	727 627 176	3	-	4.156
* 315	3	10	6	M10x110	727 627 177	3	-	4.267
* 315	4	10	6	M10x110	727 627 178	3	-	4.279

d [mm]	Rp [inch]	d1 [mm]	L [mm]	L1 [mm]	H [mm]	H1 [mm]
* 20	½	12	46	77	59	26
* 25	½	13	49	79	58	15
* 25	¾	13	49	79	58	15
* 32	½	14	49	79	62	20
* 32	¾	14	49	79	62	20
* 32	1	14	62	87	70	20
40	½	21	62	86	71	20
40	¾	21	62	86	71	20
40	1	21	62	86	70	19
50	½	21	62	86	82	20
50	¾	21	62	86	82	20
50	1	21	62	86	82	20
50	1 ¼	21	62	86	82	20
63	½	18	62	101	96	21
63	¾	24	62	101	96	21
63	1	31	62	101	96	21
63	1 ¼	31	62	101	96	21
63	1 ½	31	62	101	96	21
75	½	16	79	123	102	14
75	¾	21	79	123	104	16
75	1	27	79	123	107	19
75	1 ¼	35	79	123	109	21
75	1 ½	42	79	123	109	21
75	2	53	79	123	112	24
90	½	16	87	138	116	14
90	¾	21	87	138	118	16
90	1	27	87	138	121	19

table continued next page



d [mm]	Rp [inch]	d1 [mm]	L [mm]	L1 [mm]	H [mm]	H1 [mm]
90	1 ¼	35	87	138	123	21
90	1 ½	42	87	138	123	21
90	2	53	87	138	126	24
110	½	15	99	152	150	23
110	¾	20	99	152	150	23
110	1	26	99	152	150	23
110	1 ¼	35	99	152	150	23
110	1 ½	41	99	152	150	23
110	2	51	99	152	150	23
110	3	85	99	152	150	23
125	½	15	101	166	169	24
125	¾	20	101	166	169	24
125	1	26	101	166	169	24
125	1 ¼	35	101	166	168	23
125	1 ½	41	101	166	168	23
125	2	50	101	166	168	23
125	3	85	139	178	180	37
125	4	90	139	178	181	38
140	½	18	114	207	191	25
140	¾	24	114	207	191	25
140	1	30	114	207	191	25
140	1 ¼	38	114	207	191	25
140	1 ½	45	114	207	191	24
140	2	50	114	207	191	24
140	3	85	142	208	201	38
140	4	90	142	208	201	38
160	½	18	114	226	215	24
160	¾	24	114	226	215	24
160	1	30	114	226	215	24
160	1 ¼	37	114	226	215	24
160	1 ½	45	114	226	215	24
160	2	51	114	226	215	24
160	3	84	142	228	222	24
160	4	90	142	228	222	24
* 180	1	30	169	262	265	38
* 180	1 ¼	36	169	262	265	38
* 180	1 ½	42	169	262	265	38
* 180	2	54	169	262	265	38
* 180	3	84	169	262	265	38
* 180	4	108	169	262	265	38
* 200	1 ½	45	169	262	265	38
* 200	2	54	169	262	265	38
* 200	3	85	169	262	265	38
* 200	4	103	169	262	267	40
* 225	1 ½	45	145	287	287	26
* 225	2	51	145	287	287	26
* 225	3	85	174	287	295	37
* 225	4	103	174	287	295	38
* 250	2	55	178	310	314	38
* 250	3	85	178	310	314	38
* 250	4	103	178	310	314	38
280	2	51	179	335	326	31
* 280	3	78	179	335	338	41
* 280	4	98	179	335	338	46
315	2	51	246	390	350	31
* 315	3	78	246	390	363	41
* 315	4	98	246	390	363	46

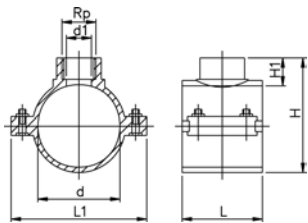


654 - Blue clamp saddles with stainless steel reinforcing ring, flat gasket and galvanized bolts and nuts (PN16-PN10)

- water PN16-10
- suitable for PE and PVC pipes
- female thread: ISO 7 (parallel)
- material: PP
- gasket: O-ring with flat lip (NBR)
- reinforcement ring: stainless steel AISI430
- bolts and nuts : galvanized
- colour: blue
- B= N° of bolts
- M= bolt type
- (*) with O-ring gasket

d [mm]	Rp [inch]	PN	B	M	Code	SP	GP	kg
* 20	½	16	2	M8X40	158 001 041	1	180	0.119
* 25	½	16	2	M8X30	158 001 042	1	150	0.110
* 25	¾	16	2	M8X30	158 001 043	1	150	0.123
* 32	½	16	2	M8X30	158 001 044	1	150	0.103
* 32	¾	16	2	M8X30	158 001 045	1	150	0.115
* 32	1	16	2	M8X40	158 001 046	1	100	0.162
40	½	16	2	M8X40	158 001 047	1	100	0.135
40	¾	16	2	M8X40	158 001 048	1	100	0.146
40	1	16	2	M8X40	158 001 049	1	100	0.153
50	½	16	4	M8X40	158 001 050	1	100	0.196
50	¾	16	4	M8X40	158 001 051	1	100	0.209
50	1	16	4	M8X40	158 001 052	1	100	0.217
50	1 ¼	16	4	M8X40	158 001 053	1	100	0.221
63	½	16	4	M8X40	158 001 054	1	70	0.212
63	¾	16	4	M8X40	158 001 055	1	70	0.222
63	1	16	4	M8X40	158 001 056	1	70	0.228
63	1 ¼	16	4	M8X40	158 001 058	1	60	0.268
63	1 ½	16	4	M8X40	158 001 057	1	60	0.275
75	½	16	4	M8X60	158 001 059	1	40	0.364
75	¾	16	4	M8X60	158 001 060	1	40	0.376
75	1	16	4	M8X60	158 001 061	1	40	0.384
75	1 ¼	16	4	M8X60	158 001 063	1	40	0.421
75	1 ½	16	4	M8X60	158 001 062	1	40	0.428
75	2	16	4	M8X60	158 001 064	1	40	0.437
90	½	16	4	M8X60	158 001 065	1	34	0.412
90	¾	16	4	M8X60	158 001 066	1	34	0.421
90	1	16	4	M8X60	158 001 067	1	34	0.432
90	1 ¼	16	4	M8X60	158 001 069	1	34	0.472
90	1 ½	16	4	M8X60	158 001 068	1	30	0.474
90	2	16	4	M8X60	158 001 070	1	30	0.481
110	½	16	6	M8X50	158 001 071	1	20	0.511
110	¾	16	6	M8X50	158 001 072	1	20	0.523
110	1	16	6	M8X50	158 001 073	1	20	0.533
110	1 ¼	16	6	M8X50	158 001 075	1	20	0.565
110	1 ½	16	6	M8X50	158 001 074	1	20	0.566
110	2	16	6	M8X50	158 001 076	1	20	0.570
110	3	6	6	M8x70	158 001 077	12	-	1.108
125	½	16	6	M8X50	158 001 078	1	20	0.578
125	¾	16	6	M8X50	158 001 079	1	20	0.590
125	1	16	6	M8X50	158 001 080	1	20	0.592
125	1 ¼	16	6	M8X50	158 001 082	1	20	0.629
125	1 ½	16	6	M8X50	158 001 081	1	20	0.627
125	2	16	6	M8X50	158 001 083	1	20	0.640
125	3	6	6	M8X70	158 001 084	12	-	1.009
125	4	6	6	M8X70	158 001 085	12	-	1.051
140	½	16	6	M8X70	158 001 086	20	-	0.830
140	¾	16	6	M8X70	158 001 087	20	-	0.843
140	1	16	6	M8X70	158 001 088	20	-	0.849
140	1 ¼	16	6	M8X70	158 001 090	20	-	0.880
140	1 ½	16	6	M8X70	158 001 089	20	-	0.892

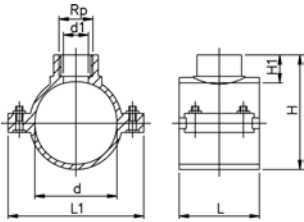
table continued next page



d [mm]	Rp [inch]	PN	B	M	Code	SP	GP	kg
140	2	16	6	M8X70	158 001 091	20	-	0.898
140	3	10	6	M8X70	158 001 092	10	-	1.132
140	4	10	6	M8X70	158 001 093	10	-	1.196
160	½	16	6	M8X70	158 001 094	20	-	0.899
160	¾	16	6	M8X70	158 001 095	20	-	0.908
160	1	16	6	M8X70	158 001 096	20	-	0.917
160	1 ¼	16	6	M8X70	158 001 098	20	-	0.950
160	1 ½	16	6	M8X70	158 001 097	20	-	0.954
160	2	16	6	M8X70	158 001 099	20	-	0.956
160	3	10	6	M8X70	158 001 100	10	-	1.185
160	4	10	6	M8X70	158 001 101	10	-	1.262
* 180	1	10	6	M10X80	158 001 102	7	-	1.980
* 180	1 ¼	10	6	M10X80	158 001 104	7	-	2.013
* 180	1 ½	10	6	M10X80	158 001 103	7	-	2.007
* 180	2	10	6	M10X80	158 001 105	7	-	2.018
* 180	3	10	6	M10X80	158 001 106	7	-	2.043
* 180	4	10	6	M10X80	158 001 107	7	-	2.092
* 200	1 ½	10	6	M10X80	158 001 108	8	-	1.966
* 200	2	10	6	M10X80	158 001 109	7	-	1.946
* 200	3	10	6	M10X80	158 001 110	7	-	1.980
* 200	4	10	6	M10X80	158 001 111	7	-	2.020
* 225	1 ½	10	6	M10X80	158 001 112	5	-	2.049
* 225	2	10	6	M10X80	158 001 113	5	-	2.050
* 225	3	10	6	M10X80	158 001 114	5	-	2.150
* 225	4	10	6	M10X80	158 001 115	5	-	2.184
* 250	2	10	6	M10X80	158 001 116	5	-	2.472
* 250	3	10	6	M10X80	158 001 117	5	-	2.466
* 250	4	10	6	M10X80	158 001 118	5	-	2.478
280	2	10	6	M10X160	158 001 119	3	-	3.440
* 280	3	10	6	M10X160	158 001 120	3	-	3.543
* 280	4	10	6	M10X160	158 001 121	3	-	3.585
315	2	10	6	M10X110	158 001 122	3	-	4.156
* 315	3	10	6	M10X110	158 001 123	3	-	4.267
* 315	4	10	6	M10X110	158 001 124	3	-	4.279

d [mm]	Rp [inch]	d1 [mm]	L [mm]	L1 [mm]	H [mm]	H1 [mm]
* 20	½	12	46	77	59	26
* 25	½	13	49	79	58	15
* 25	¾	13	49	79	58	15
* 32	½	14	49	79	62	20
* 32	¾	14	49	79	62	20
* 32	1	14	62	87	70	20
40	½	21	62	86	71	20
40	¾	21	62	86	71	20
40	1	21	62	86	70	19
50	½	21	62	86	82	20
50	¾	21	62	86	82	20
50	1	21	62	86	82	20
50	1 ¼	21	62	86	82	20
63	½	18	62	101	96	21
63	¾	24	62	101	96	21
63	1	31	62	101	96	21
63	1 ¼	31	62	101	96	21
63	1 ½	31	62	101	96	21
75	½	16	79	123	102	14
75	¾	21	79	123	104	16
75	1	27	79	123	107	19
75	1 ¼	35	79	123	109	21
75	1 ½	42	79	123	109	21
75	2	53	79	123	112	24
90	½	16	87	138	116	14
90	¾	21	87	138	118	16
90	1	27	87	138	121	19
90	1 ¼	35	87	138	123	21
90	1 ½	42	87	138	123	21

table continued next page

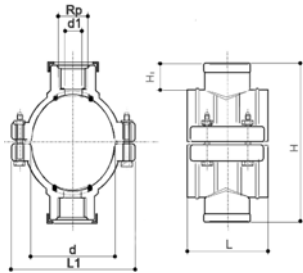


d [mm]	Rp [inch]	d1 [mm]	L [mm]	L1 [mm]	H [mm]	H1 [mm]
90	2	53	87	138	126	24
110	½	15	99	152	150	23
110	¾	20	99	152	150	23
110	1	26	99	152	150	23
110	1 ¼	35	99	152	150	23
110	1 ½	41	99	152	150	23
110	2	51	99	152	150	23
110	3	85	99	152	150	23
125	½	15	101	166	169	24
125	¾	20	101	166	169	24
125	1	26	101	166	169	24
125	1 ¼	35	101	166	168	23
125	1 ½	41	101	166	168	23
125	2	50	101	166	168	23
125	3	85	139	178	180	37
125	4	90	139	178	181	38
140	½	18	114	207	191	25
140	¾	24	114	207	191	25
140	1	30	114	207	191	25
140	1 ¼	38	114	207	191	25
140	1 ½	45	114	207	191	24
140	2	50	114	207	191	24
140	3	85	142	208	201	38
140	4	90	142	208	201	38
160	½	18	114	226	215	24
160	¾	24	114	226	215	24
160	1	30	114	226	215	24
160	1 ¼	37	114	226	215	24
160	1 ½	45	114	226	215	24
160	2	51	114	226	215	24
160	3	84	142	228	222	38
160	4	90	142	228	222	38
* 180	1	30	169	262	265	38
* 180	1 ¼	36	169	262	265	38
* 180	1 ½	54	169	262	265	38
* 180	2	54	169	262	265	38
* 180	3	85	169	262	265	38
* 180	4	103	169	262	267	40
* 200	1 ½	45	169	262	265	38
* 200	2	54	169	262	265	38
* 200	3	85	169	262	265	38
* 200	4	103	169	262	267	40
* 225	1 ½	45	145	287	287	26
* 225	2	51	145	287	287	26
* 225	3	85	174	287	295	37
* 225	4	103	174	287	295	38
* 250	2	55	178	310	314	38
* 250	3	85	178	310	314	38
* 250	4	103	178	310	314	38
280	2	51	179	335	326	31
* 280	3	78	179	335	338	41
* 280	4	98	179	335	338	46
315	2	51	246	390	350	31
* 315	3	78	246	390	363	41
* 315	4	98	246	390	363	46



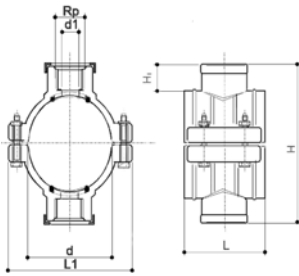
664 - Double blue clamp saddles with stainless steel reinforcing ring, flat gasket and galvanized bolts and nuts (PN16-PN10)

- water PN16-10
- suitable for PE and PVC pipes
- female thread: ISO 7 (parallel)
- material: PP
- gasket: O-ring with flat lip (NBR)
- reinforcement ring: stainless steel AISI430
- bolts and nuts : galvanized
- colour: blue
- B= N° of bolts
- M= bolt type
- (*) with O-ring gasket
- non stock items



d	Rp	PN	B	M	Code	SP	GP	kg	d1	L	L1	H	H1
[mm]	[inch]								[mm]	[mm]	[mm]	[mm]	[mm]
* 20	½	16	2	M8X40	158 001 125	1	150	0.152	12	46	77	84	26
* 25	½	16	2	M8X30	158 001 126	1	150	0.130	13	49	79	80	15
* 25	¾	16	2	M8X30	158 001 127	1	150	0.156	13	49	79	80	15
* 32	½	16	2	M8X30	158 001 128	1	150	0.124	14	49	79	80	20
* 32	¾	16	2	M8X30	158 001 129	1	150	0.148	14	62	87	87	20
* 32	1	16	2	M8X50	158 001 130	1	100	0.212	14	62	87	91	20
40	½	16	2	M8X50	158 001 131	1	100	0.168	21	62	86	91	20
40	¾	16	2	M8X50	158 001 132	1	100	0.190	21	62	86	91	20
40	1	16	2	M8X50	158 001 133	1	100	0.204	21	62	86	89	19
50	½	16	4	M8X50	158 001 134	1	100	0.236	21	62	86	101	20
50	¾	16	4	M8X50	158 001 135	1	100	0.262	21	62	86	101	20
50	1	16	4	M8X50	158 001 136	1	100	0.278	21	62	86	101	20
50	1 ¼	16	4	M8X50	158 001 137	1	100	0.286	21	62	86	101	20
63	½	16	4	M8X50	158 001 138	1	60	0.254	18	62	101	115	21
63	¾	16	4	M8X50	158 001 139	1	60	0.274	24	62	101	115	21
63	1	16	4	M8X50	158 001 140	1	60	0.286	31	62	101	115	21
63	1 ¼	16	4	M8X50	158 001 142	1	60	0.366	31	62	101	115	21
63	1 ½	16	4	M8X50	158 001 141	1	60	0.380	31	62	101	115	21
75	½	16	4	M8X70	158 001 143	1	40	0.392	16	79	123	115	14
75	¾	16	4	M8X70	158 001 144	1	40	0.416	21	79	123	119	16
75	1	16	4	M8X70	158 001 145	1	40	0.432	27	79	123	125	19
75	1 ¼	16	4	M8X70	158 001 147	1	32	0.506	35	79	123	129	21
75	1 ½	16	4	M8X70	158 001 146	1	32	0.520	42	79	123	129	21
75	2	16	4	M8X70	158 001 148	1	30	0.538	53	79	123	135	24
90	½	16	4	M8X70	158 001 149	1	30	0.440	16	87	138	129	14
90	¾	16	4	M8X70	158 001 150	1	30	0.458	21	87	138	133	16
90	1	16	4	M8X70	158 001 151	1	30	0.480	27	87	138	139	19
90	1 ¼	16	4	M8X70	158 001 153	1	30	0.560	35	87	138	145	21
90	1 ½	16	4	M8X70	158 001 152	1	30	0.564	42	87	138	145	21
90	2	16	4	M8X70	158 001 154	1	30	0.578	53	87	138	151	24
110	½	16	6	M8X70	158 001 155	1	20	0.572	15	99	152	169	23
110	¾	16	6	M8X70	158 001 156	1	20	0.596	20	99	152	169	23
110	1	16	6	M8X70	158 001 157	1	20	0.616	26	99	152	169	23
110	1 ¼	16	6	M8X70	158 001 159	1	20	0.680	35	99	152	169	23
110	1 ½	16	6	M8X70	158 001 158	1	20	0.682	41	99	152	169	23
110	2	16	6	M8X70	158 001 160	1	20	0.690	51	99	152	169	23
110	3	6	6	M8X70	158 001 161	10	-	1.362	85	99	152	169	23
125	½	16	6	M8X70	158 001 162	1	20	0.642	15	101	166	189	24
125	¾	16	6	M8X70	158 001 163	1	20	0.666	20	101	166	189	24
125	1	16	6	M8X70	158 001 164	1	20	0.670	26	101	166	189	24
125	1 ¼	16	6	M8X70	158 001 166	1	20	0.744	35	101	166	188	23
125	1 ½	16	6	M8X70	158 001 165	1	20	0.740	41	101	166	188	23
125	2	16	6	M8X70	158 001 167	1	20	0.766	50	101	166	188	23
125	3	6	6	M8X70	158 001 168	10	-	1.238	85	139	178	188	37
125	4	6	6	M8X70	158 001 169	10	-	1.322	90	139	178	188	38
140	½	16	6	M8X70	158 001 170	20	-	0.868	18	114	207	209	25
140	¾	16	6	M8X70	158 001 171	20	-	0.894	24	114	207	208	25
140	1	16	6	M8X70	158 001 172	20	-	0.906	30	114	207	208	25
140	1 ¼	16	6	M8X70	158 001 174	20	-	0.968	38	114	207	208	25

table continued next page



d [mm]	Rp [inch]	PN	B	M	Code	SP	GP	kg	d1 [mm]	L [mm]	L1 [mm]	H [mm]	H1 [mm]
140	1 ½	16	6	M8X70	158 001 173	20	-	0.992	45	114	207	206	24
140	2	16	6	M8X70	158 001 175	20	-	1.004	50	114	207	207	24
140	3	10	6	M8X70	158 001 176	10	-	1.326	85	142	208	207	38
140	4	10	6	M8X70	158 001 177	8	-	1.454	90	142	208	207	38
160	½	16	6	M8X70	158 001 178	20	-	0.928	18	114	226	225	24
160	¾	16	6	M8X70	158 001 179	20	-	0.946	24	114	226	225	24
160	1	16	6	M8X70	158 001 180	20	-	0.964	30	114	226	225	24
160	1 ¼	16	6	M8X70	158 001 182	20	-	1.030	37	114	226	225	24
160	1 ½	16	6	M8X70	158 001 181	20	-	1.038	45	114	226	225	24
160	2	16	6	M8X70	158 001 183	20	-	1.042	51	114	226	225	24
160	3	10	6	M8X70	158 001 184	5	-	1.376	85	142	228	225	38
160	4	10	6	M8X70	158 001 185	5	-	1.530	90	142	228	225	38