

PE-Hydrants

Strong in service – simple to operate

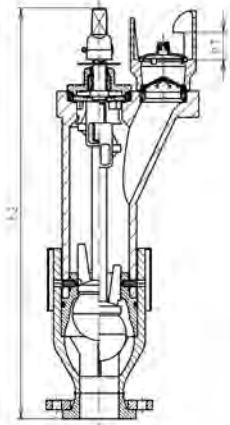


PE-Hydrants

Hydrant



- PE-Hydrant
- PE 100 SDR 11 (ISO S5)
- Underground hydrant
- 16 bar Water
- PP/steel loose flange acc. DIN 2501
- For pipe covers according to DIN 3221
- Polystyrene drainage element available under 193.281.465

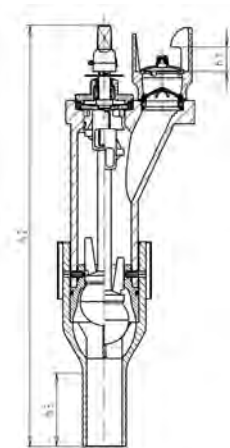


| DN [mm] | Code | Weight [kg] | RD [m] | H1 [mm] | H2 [mm] |
|------------|--------------------|----------------|-----------|------------|------------|
| 80 | 193 281 300 | 20.500 | 1 | 50 | 774 |
| 80 | 193 281 301 | 21.178 | 1 | 50 | 1024 |
| 80 | 193 281 302 | 23.100 | 2 | 50 | 1274 |

Hydrant



- PE-Hydrant
- PE 100 SDR 11 (ISO S5)
- Underground hydrant
- 16 bar Water
- PE spigot d90 mm SDR11
- For pipe covers according to DIN 3221
- Polystyrene drainage element available under 193.281.465

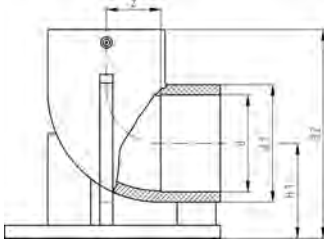


| d [mm] | Code | Weight [kg] | RD [m] | H2 [mm] | H3 [mm] | H1 [mm] |
|-----------|--------------------|----------------|-----------|------------|------------|------------|
| 90 | 193 281 200 | 19.177 | 1.00 | 881 | 150 | 50 |
| 90 | 193 281 201 | 20.856 | 1.25 | 1131 | 150 | 50 |
| 90 | 193 281 202 | 21.000 | 1.50 | 1381 | 150 | 50 |



Duckfoot bend MMN - piece

- PE 100 SDR 11 (ISO S5)
- For pipe covers according to DIN 3221
- 16 bar Water
- Fitted with welded base plate for a better stability
- 4 mm pin connectors
- Limited path fusion indicators

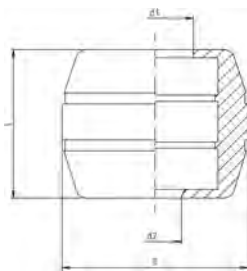


| d [mm] | Code | Weight [kg] | d1 [mm] | H1 [mm] | H2 [mm] |
|-----------|--------------------|----------------|------------|------------|------------|
| 90 | 193 281 102 | 1.758 | 113 | 95 | 205 |
| 110 | 193 281 103 | 2.455 | 136 | 109 | 240 |



Drainage stone For PE-hydrant

- Consists of 2 polystyrene half-shells
- Suitable for spigot and flange edition
- Fits exactly onto hydrants' shape
- Self-locking feature
- Groves for tape fit
- Volumetric capacity 8.5 l
- Drain away slots underside



| L [mm] | D [mm] | Code | Weight [kg] | d2 [mm] | d1 [mm] |
|-----------|-----------|--------------------|----------------|------------|------------|
| 275 | 342 | 193 281 465 | 0.161 | 96 | 140 |