

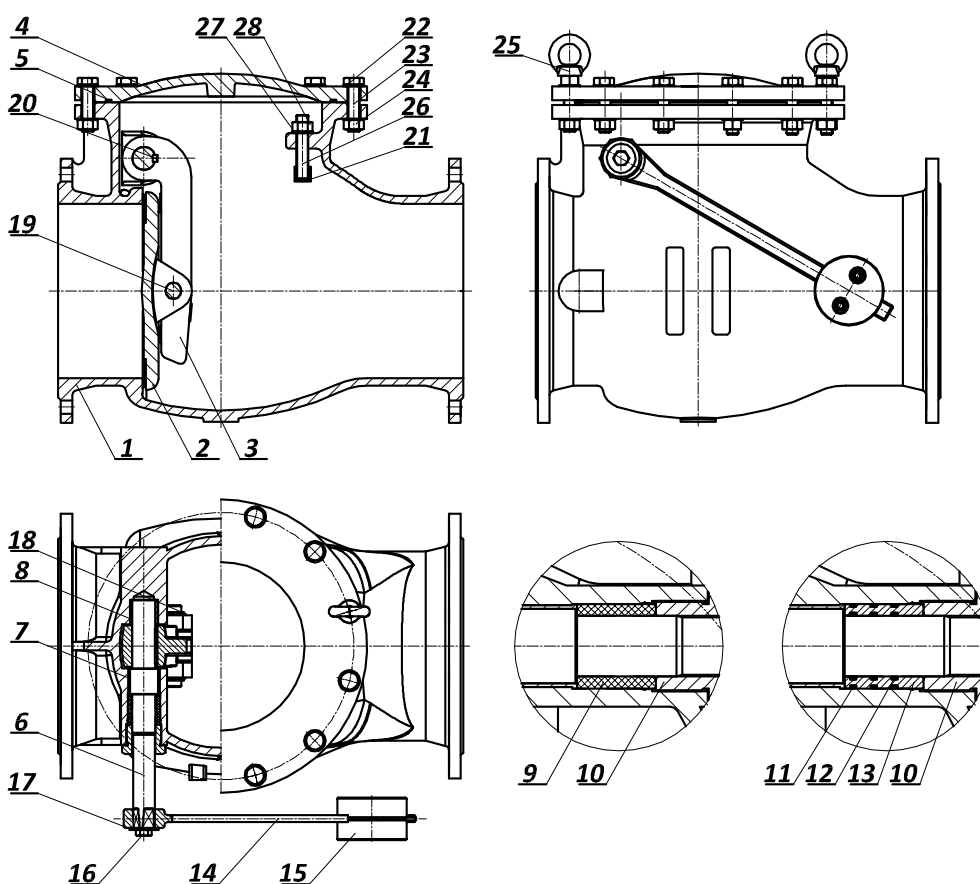
VENTIL S POVRATNOM ZAKLOPKOM PREMA EN 12334 KLAPPEN - RÜCKSCHLAGVENTIL NACH EN 12334 SWING CHECK VALVE ACC. TO EN 12334

Art N°
V2-08



GSK-ID: 1238

NAZIVNI PROMJER NENNWEITE NOMINAL SIZE	NAZIVNI TLAK NENNDRUCK PRESSURE RATING	PRIRUBNICE FLANSCH FLANGES EN 1092-2	VODNI ISPITNI TLAK PREMA EN 12266 WASSERPRÜFD RUCK NACH EN 12266 TEST PRESSURE ACCORDING TO 12266 bar	
			KUČIŠTE GEHAUSE BODY	ZATVORENO GESCHLOSSEN CLOSED
DN	PN bar	bar		
100 – 1000	10	10	15	11
100 – 1000	16	16	24	17,6
50 – 200	25	25	37,5	27,5
50 – 200	40	40	60	44



STANDARDNA NAMJENA: VODA, PITKA VODA, OTPADNA VODA
STANDARD VERWENDUNG: WASSER, TRINKWASSER, ABWASSER
STANDARD APPLICATION: WATER, POTABLE WATER, WASTE WATER

MAX. RADNA TEMPERATURA: 60°C (ostalo na upit)
MAX. ARBEIT TEMPERATUR: 60°C (Andere auf Anfrage)
MAX. WORKING TEMPERATURE: 60°C (other on request)

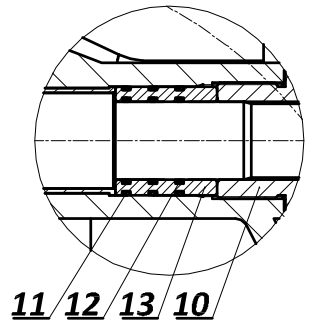
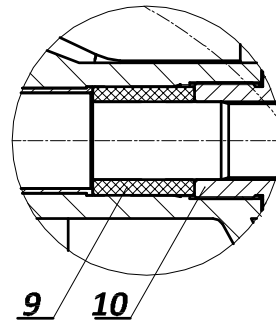
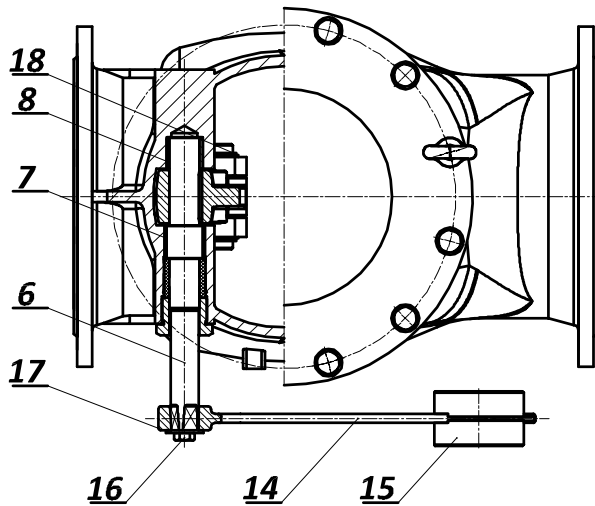
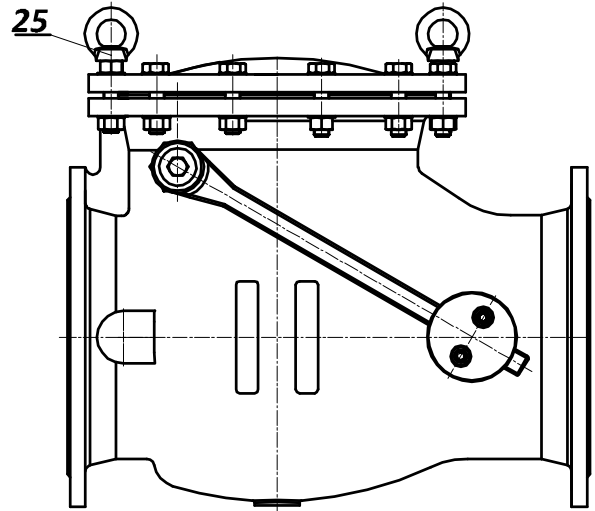
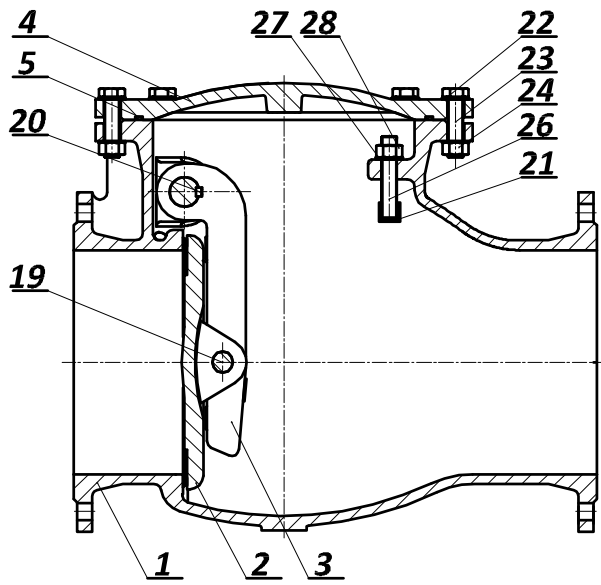
Ugradna mjera / Baulängereihe / Face to face: EN 558 SERIES 48

Standardna površinska zaštita: plastificirano min. 250 mic RAL 5015
Standard beschichtung: Pulverbeschichted min. 250 mic RAL 5015
Standard coating: Fusion bonded epoxy powder min. 250 mic RAL 5015

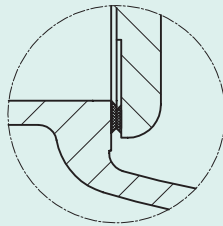
Ostali mediji / aplikacije ili površinska zaštita na upit
Andere Medium / Verwendung oder beschichtung auf Anfrage
Other medium / application or coating on request

Prirubnice izvedene za ugradnju prema EN 1092-2 ili na zahtjev prema ostalim standardima.
Einbaufansche nach EN 1092-2 oder auf Anfrage nach andere Standard.
Installation flanges according to EN 1092-2 or on request according to other standard.

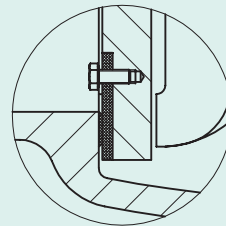
Upravljanje polugom i utegom. Na zahtjev moguće upravljanje bez poluge i utega ili hidrauličkim amortizerom.
Antriebsart mit Hebel und Gewicht. Auf Anfrage, ohne Hebel und Gewicht, oder hydraulische Stoßdämpfer verwalten.
Operation with lever and weight. On request without lever and weight or with hydraulic device.



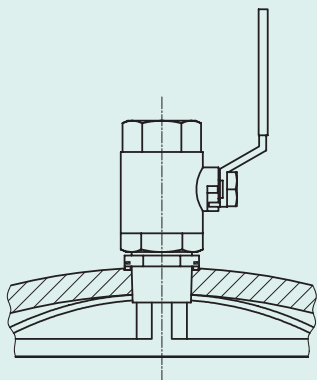
BRTVLJENJE
ABDICHTUNG
SEALING



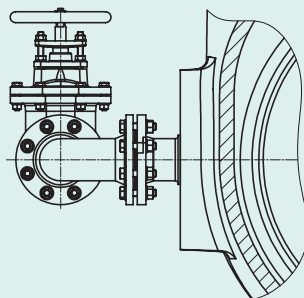
X15CrNiMn 18-8 / X15CrNiMn 18-8
CC480K / CC480K



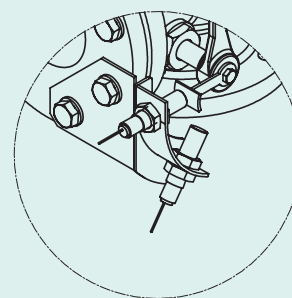
X15CrNiMn 18-8 / EPDM
X15CrNiMn 18-8 / NBR
X15CrNiMn 18-8 / VITON
CC480K / EPDM
CC480K / NBR
CC480K / VITON



Kuglasta slavina
Kugelventil
Ball Valve



Mimovod
Umführung
By - Pass



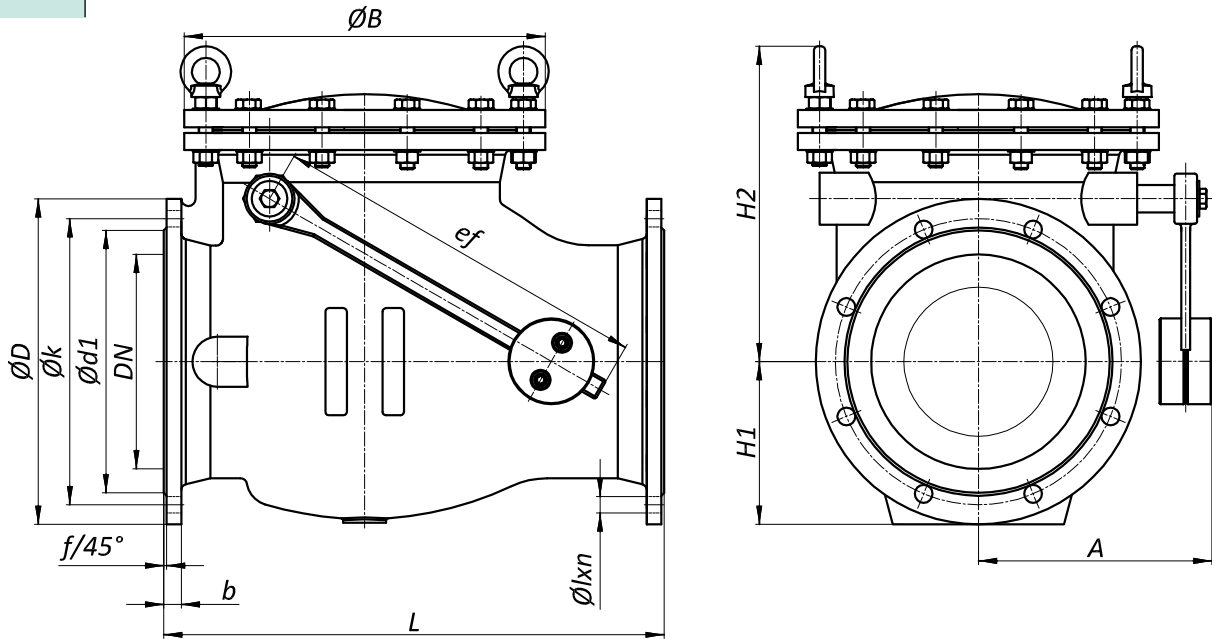
Mikroprekidači
Mikroschalter
Limit Switches

POZICIJA POSITION POSITION	NAZIV POZICIJE	TEIL	PART	MATERIJAL MATERIAL MATERIAL
1	Kučište	Gehäuse	Body	EN-GJS-400-15
2	Zaklopka	Klappenscheibe	Flap	EN-GJS-400-15
3	Poluga zaklopke	Hebel	Flap Lever	EN-GJS-400-15
4	Poklopac	Deckel	Cover	EN-GJS-400-15
5	"O" brtva	"O" Ring	"O" Ring	EPDM
6	Vratilo	Welle	Shaft	X20Cr13
7	Ležajna puškica I	Lagerbuchse I	Bearing Bush I	CC493K
8	Ležajna puškica II	Lagerbuchse II	Bearing Bush II	CC493K
9	Pletenica	Packung	Packing	PTFE
10	Poklopac	Deckel	Cover	Ms
11	"O" brtva	"O" Ring	"O" ring	EPDM
12	"O" brtva	"O" Ring	"O" ring	EPDM
13	Brtvena puškica	Dichtungsbuchse	Sealing Bush	CC493K
14	Poluga	Hebel	Lever	EN-GJS-400-15
15	Uteg	Gewicht	Weight	EN-GJS-400-15
16	Vijak	Schraube	Screw	8.8 galv.
17	Podložna pločica	Schaube	Washer	galv.
18	Uskočnik	Sicherung	Circlip	A4
19	Zatik	Stift	Pin	X20Cr13
20	Pero	Passfeder	Parallel Key	X20Cr13
21	Gumeni odbojnik	Gummipuffer	Rubber Bumper	EPDM
22	Podložna pločica	Schaube	Washer	galv.
23	Vijak	Schraube	Screw	8.8 galv.
24	Matica	Mutter	Nut	8 galv.
25	Očni vijak	Schraube zu Erhöhung	Lifting Eye Nut	C15
26	Navojna šipka	Gewindestange	Threaded rod	A4
27	Podložna pločica	Schaube	Washer	A4
28	Matica	Mutter	Nut	A4

* standardni materijali
* ostali materijali na upit

* Standardwerkstoffe
* Andere Werkstoffe auf Anfrage

* standard materials
* other materials on request



DN	L	H ₁		H ₂	e _f	A	B	PN 10						PN 16						f	m (kg)
		PN10	PN16					D	k	d ₁	l	n	b	D	k	d ₁	l	n	b		
50	200	87,5	87,5	172	116	132	158	165	125	99	19	4	19	165	125	99	19	4	19	3	17
65	240	97,5	97,5	203	145	150	193	185	145	118	19	4/8	19	185	145	118	19	4/8	19	3	28
80	260	105	105	216	160	152	212	200	160	132	19	8	19	200	160	132	19	8	19	3	30
100	300	115	115	242	190	157	235	220	180	156	19	8	19	220	180	156	19	8	19	3	38
125	350	130	130	260	226	185	265	250	210	184	19	8	19	250	210	184	19	8	19	3	54
150	400	147,5	147,5	279	266	216	302	285	240	211	23	8	19	285	240	211	23	8	19	3	71
200	500	180	180	367	343	265	395	340	295	266	23	8	20	340	295	266	23	12	20	3	125
250	600	207,5	212,5	400	440	272	421	395	350	319	23	12	22	405	355	319	28	12	22	3	160
300	700	232	240	441	535	334	505	445	400	370	23	12	24,5	460	410	370	28	12	24,5	4	210
350	800	262,5	270	514	585	412	560	505	460	429	23	16	24,5	520	470	429	28	16	26,5	4	355
400	900	292,5	300	560	660	465	622	565	515	480	28	16	24,5	580	525	480	31	16	28	4	470
500	1100	345	367,5	675	800	485	730	670	620	582	28	20	26,5	715	650	609	34	20	31,5	4	720
600	1300	400	430	781	900	585	910	780	725	682	31	20	30	840	770	720	37	20	36	5	1000
700	1500	457,5	465	928	1000	610	1025	895	840	794	31	24	32,5	910	840	794	37	24	39,5	5	1720
800	1700	517,5	522,5	1005	1000	742	1115	1015	950	901	34	24	35	1025	950	901	41	24	43	5	2230
900	1900	567,5	572,5	1149	1000	850	1255	1115	1050	1001	34	28	37,5	1125	1050	1001	41	28	46,5	5	3130
1000	2100	625	637,5	1276	1500	869	1355	1230	1160	1112	37	28	40	1255	1170	1112	44	28	50	5	4150

* ostali profili na upit

* andere Nennweite auf Anfrage

* other nominal sizes on request

DN	L	H ₁		H ₂	e _f	A	B	PN 25						PN 40						f	m (kg)
		PN25	PN40					D	k	d ₁	l	n	b	D	k	d ₁	l	n	b		
50	200	87,5	87,5	172	116	132	158	165	125	99	19	4	19	165	125	99	19	4	19	3	19
65	240	97,5	97,5	203	145	150	193	185	145	118	19	8	19	185	145	118	19	8	19	3	30
80	260	105	105	216	160	152	212	200	160	132	19	8	19	200	160	132	19	8	19	3	33
100	300	122,5	122,5	242	190	157	235	235	190	156	23	8	19	235	190	156	23	8	19	3	41
125	350	140	140	260	226	185	265	270	220	184	28	8	19	270	220	184	28	8	23,5	3	59
150	400	155	155	279	266	216	302	300	250	211	28	8	20	300	250	211	28	8	26	3	78
200	500	190	197,5	367	343	265	395	360	310	274	28	12	22	375	320	284	31	12	30	3	137

* ostali profili na upit

* andere Nennweite auf Anfrage

* other nominal sizes on request

