

Branch Saddle PE100

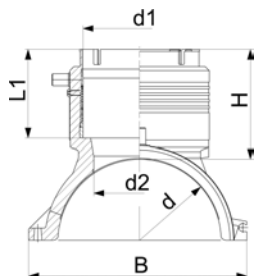
Branch saddle outlet 90-125 mm

Branch saddle topload outlet 90-500 mm



ELGEF Plus branch saddle

Branch saddle outlet 90 - 125 mm



- PE 100 SDR 11 (ISO S5)
- 10 bar Gas / 16 bar Water
- Branch Saddle complete, incl. lower part and 3 screws
- Additional fixing with snatch hinge
- Electrofusion outlet with integrated pipe fixation
- Protected wire without medium contact
- 4 mm pin connectors
- Limited path fusion indicators
- * Delivered without lower part. Pipe fixation with multiple use assembly tool-
no. 193.281.027

	d [mm]	d1 [mm]	Code	Weight [kg]	H [mm]	L [mm]	L1 [mm]	B [mm]	d2 [mm]
	110	90	193 135 009	1.124	101	220	82	164	65
	110	110	193 135 010	1.224	107	220	88	164	65
	125	90	193 135 019	1.134	101	220	82	179	65
	125	110	193 135 020	1.290	107	220	88	179	65
*	140	90	193 135 029	0.982	101	220	81	195	65
*	140	110	193 135 030	1.087	107	220	87	195	65
	160	90	193 135 039	1.449	102	240	82	215	65
	160	110	193 135 040	1.582	108	240	88	215	86
	160	125	193 135 041	1.782	129	240	99	215	86
	180	90	193 135 049	1.672	102	260	82	237	65
	180	110	193 135 050	1.765	108	260	88	237	86
	180	125	193 135 051	2.015	129	260	99	237	86
	200	90	193 135 059	1.803	102	260	82	253	65
	200	110	193 135 060	1.963	108	260	88	253	86
	200	125	193 135 061	2.128	129	260	99	253	86
	225	90	193 135 069	2.006	102	260	82	287	65
	225	110	193 135 070	2.400	108	260	88	287	86
	225	125	193 135 071	2.312	129	260	99	287	86
	250	90	193 135 079	2.145	102	260	82	312	65
	250	110	193 135 080	2.258	108	260	88	312	86
	250	125	193 135 081	2.500	129	260	99	312	86



Cross connection branch saddle

- Enables the connection of two Branch Saddle as a cross
- Complete with screws, flat washers and nuts

d [mm]	Code	Weight [kg]
110 - 160	193 280 880	0.268
180 - 250	193 280 881	0.282

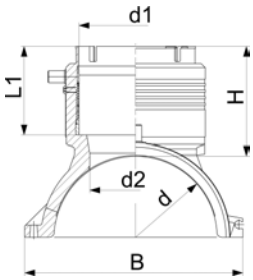


Multiple use assembly tool branch saddle d140mm

- Only to be used with Branch Saddle d140mm
- Delivered as complete Kit including screws and belt

d [mm]	Code	Weight [kg]
140	193 281 027	0.724

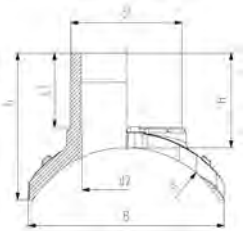
Branch saddle topload outlet 90 - 125 mm



- PE 100 SDR 11 (ISO S5)
- 10 bar Gas / 16 bar Water
- Branch Saddle for assembling as Topload with tool 799.350.477; angle adaptors (799.350.340) for fusion cable required
- Electrofusion outlet with integrated pipe fixation
- Protected wire without medium contact
- 4 mm pin connectors
- Limited path fusion indicators

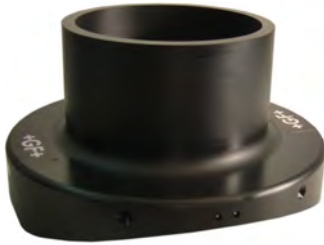
d [mm]	d1 [mm]	Code	Weight [kg]	H [mm]	L [mm]	L1 [mm]	B [mm]	d2 [mm]
280	90	193 135 289	1.242	102	260	82	243	65
280	110	193 135 290	1.295	108	260	88	243	86
280	125	193 135 291	1.530	129	260	99	243	86
315 - 355	90	193 135 309	1.214	102	260	82	249	65
315 - 355	110	193 135 310	1.297	108	260	88	249	86
315 - 355	125	193 135 311	1.530	129	260	99	249	86
400 - 450	90	193 135 329	1.022	102	260	82	256	65
400 - 450	110	193 135 330	1.116	108	260	88	256	86
400 - 450	125	193 135 331	1.369	129	260	99	256	86
500 - 630	90	193 135 159	1.086	102	260	82	263	65
500 - 630	110	193 135 160	1.159	108	260	88	263	86
500 - 630	125	193 135 161	1.388	129	260	99	263	86

Branch saddle topload outlet 160 - 225 mm



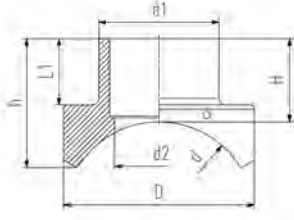
- PE 100 SDR 11 (ISO S5)
- 10 bar Gas / 16 bar Water
- Branch Saddle installation only with installation set Topload TL225 (799.300.807)
- Angle adaptors (799.350.340) for fusion cable required
- 4 mm pin connectors
- Limited path fusion indicators
- Spigot outlet for butt- and electrofusion
- Full pressure applicable - no derating factor

d [mm]	d1 [mm]	Code	Weight [kg]	h [mm]	H [mm]	L [mm]	L1 [mm]	B [mm]	d2 [mm]
315	160	193 135 402	2.662	212	137	322	110	282	131
315	225	193 135 404	4.594	306	160	366	127	260	184
355	160	193 135 412	2.662	206	137	322	110	282	131
355	225	193 135 414	4.710	319	160	366	127	249	184
400	160	193 135 422	2.678	198	137	322	110	300	131
400	225	193 135 424	4.700	329	160	366	127	241	184
450	160	193 135 432	2.678	194	137	322	110	300	131
450	225	193 135 434	4.700	329	160	366	127	233	184
500	160	193 135 442	2.708	186	137	322	110	310	131
500	225	193 135 444	4.650	344	160	366	127	226	184
560	160	193 135 452	2.708	183	137	322	110	310	131
560	225	193 135 454	4.650	344	160	366	127	220	184
630	160	193 135 462	2.500	177	137	322	110	312	131
630	225	193 135 464	4.630	353	160	366	127	214	184
710	160	193 135 472	2.500	172	137	322	110	312	131
710	225	193 135 474	4.630	352	160	366	127	208	184
800	160	193 135 482	2.500	168	137	322	110	312	131
800	225	193 135 484	4.610	359	160	366	127	203	184
900	225	193 135 494	4.610	359	160	366	127	199	184
1000	225	193 135 504	4.610	359	160	366	127	195	184

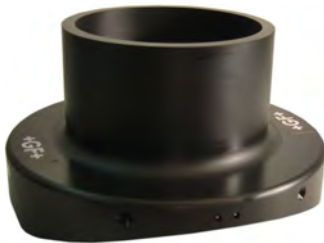


Branch saddle topload outlet 315 mm

- PE 100 SDR 11 (ISO S5)
- 10 bar Gas / 16 bar Water
- Branch saddle installation only with installation set Topload TL315 (799.350.808) or TL500 (799.300.809)
- Angle adaptors (799.350.340) for fusion cable required
- 4 mm pin connectors
- Protected wire without medium contact
- Spigot outlet for butt- and electrofusion
- Full pressure applicable - no derating factor

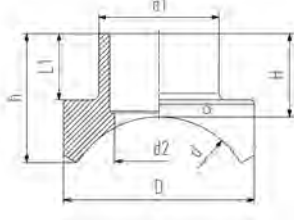


d [mm]	d1 [mm]	Code	Weight [kg]	h [mm]	H [mm]	L [mm]	L1 [mm]	D [mm]	d2 [mm]	SDR pipe
500	315	193 135 446	17.000	216	337	500	157	500	232	11 - 26
560	315	193 135 456	16.100	216	327	500	157	500	232	11 - 26
630	315	193 135 466	15.400	216	312	500	157	500	232	11 - 33
710	315	193 135 476	14.800	216	297	500	157	500	232	11 - 33
800	315	193 135 486	14.300	216	287	500	157	500	232	11 - 33
900	315	193 135 496	13.800	216	281	500	157	500	232	11 - 33
1000	315	193 135 506	13.500	216	274	500	157	500	232	11 - 33



Branch saddle topload outlet 315 - 500 mm

- PE 100 SDR 17 (ISO S8)
- 5 bar Gas / 10 bar Water
- Branch saddle installation only with installation set Topload TL500 (799.300.809)
- Angle adaptors (799.350.340) for fusion cable required
- 4 mm pin connectors
- Protected wire without medium contact
- Spigot outlet for butt- and electrofusion
- Full pressure applicable - no derating factor



d [mm]	d1 [mm]	Code	Weight [kg]	h [mm]	H [mm]	L [mm]	L1 [mm]	D [mm]	d2 [mm]	SDR pipe
710	315	193 135 676	14.000	174	266	500	157	500	250	11 - 33
800	315	193 135 686	13.500	174	261	500	157	500	250	11 - 33
900	315	193 135 696	13.100	174	251	500	157	500	250	11 - 33
900	500	193 135 698	32.600	237	406	700	219	700	397	11 - 33
1000	315	193 135 706	12.800	174	246	500	157	500	250	11 - 33
1000	500	193 135 708	31.400	237	396	700	219	700	397	11 - 33
1200	315	193 135 716	12.300	174	241	500	157	500	250	11 - 33
1200	500	193 135 718	29.400	237	378	700	219	700	397	11 - 33
1400	315	193 135 726	11.900	174	234	500	157	500	250	11 - 33
1400	500	193 135 728	28.100	237	363	700	219	700	397	11 - 33
1600	315	193 135 736	11.700	174	228	500	157	500	250	11 - 33
1600	500	193 135 738	27.100	237	352	700	219	700	397	11 - 33
2000	315	193 135 746	11.300	174	221	500	157	500	250	11 - 33
2000	500	193 135 748	25.700	237	337	700	219	700	397	11 - 33